



Thule WingBar Edge 9591/9591B

The most safe and silent roof rack. In low fit for cars with fixpoints or flush rails.

1. Thule's premium, aerodynamic rack system
2. Smoothly arched for a slim fit
3. Universal fit by the use of telescopic feet (50mm/side)
4. Easy handling with pre-assembly system and integrated foot
5. A kit-based roof rack system. Fit existing Thule Rapid System 753-kit. Use the Thule FitGuide to find out which roof rack fits your car
6. Using airplane technology to minimize sound and fuel consumption
7. WindDiffuser diverts the air currents
8. Trail Edge for reduced air resistance
9. Double molded plastic caps for best appearance and easy fitting
10. City Crash approved for 75 kg according to ISO Norm

THULE NUMBER

959100

959120

EAN CODE

7313020063805

7313020070261

ALIAS NUMBER

9591 (Aluminium)

9591B (Black)

BAR LENGTH

81,6 cm

MAX LOAD

75 kg

CARTON DIMS (LXWXH) CARTON WEIGHT

120x20x13,7 cm

5,2 kg

PALLET DIMS (LXWXH) PALLET WEIGHT

120x80x124 cm

181 kg

PCS PER PALLET

32

5 years warranty
Jahre Garantie
ans de garantie
años de garantía



CITY CRASH
Complies with DIN/ISO norm



THULE NUMBER	EAN CODE	ALIAS NUMBER
959200	7313020063812	9592 (Aluminium)
959220	7313020070285	9592B (Black)
BAR LENGTH	MAX LOAD	
89,6 cm	75 kg	
CARTON DIMS (LXWXH)	CARTON WEIGHT	
120x20x13,7 cm	5,4 kg	
PALLET DIMS (LXWXH)	PALLET WEIGHT	PCS PER PALLET
120x80x124 cm	188 kg	32



Thule WingBar Edge

9592/9592B

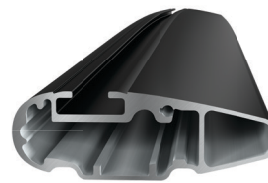
The most safe and silent roof rack. In low fit for cars with fixpoints or flush rails.

1. Thule's premium, aerodynamic rack system
2. Smoothly arched for a slim fit
3. Universal fit by the use of telescopic feet (50mm/side)
4. Easy handling with pre-assembly system and integrated foot
5. A kit-based roof rack system. Fit existing Thule Rapid System 753-kit. Use the Thule FitGuide to find out which roof rack fits your car
6. Using airplane technology to minimize sound and fuel consumption
7. WindDiffuser diverts the air currents
8. Trail Edge for reduced air resistance
9. Double molded plastic caps for best appearance and easy fitting
10. City Crash approved for 75 kg according to ISO Norm

5 years warranty
 Jahre Garantie
 ans de garantie
 años de garantía



CITY CRASH
 Complies with DIN/ISO norm



Thule WingBar Edge

9593/9593B

The most safe and silent roof rack. In low fit for cars with fixpoints or flush rails.

1. Thule's premium, aerodynamic rack system
2. Smoothly arched for a slim fit
3. Universal fit by the use of telescopic feet (50mm/side)
4. Easy handling with pre-assembly system and integrated foot
5. A kit-based roof rack system. Fit existing Thule Rapid System 753-kit. Use the Thule FitGuide to find out which roof rack fits your car
6. Using airplane technology to minimize sound and fuel consumption
7. WindDiffuser diverts the air currents
8. Trail Edge for reduced air resistance
9. Double molded plastic caps for best appearance and easy fitting
10. City Crash approved for 75 kg according to ISO Norm

THULE NUMBER

959300

959320

EAN CODE

7313020063829

7313020070292

ALIAS NUMBER

9593 (Aluminium)

9593B (Black)

BAR LENGTH

97,6 cm

MAX LOAD

75 kg

CARTON DIMS (LXWXH) CARTON WEIGHT

120x20x13,7 cm

5,6 kg

PALLET DIMS (LXWXH) PALLET WEIGHT

120x80x124 cm

194 kg

PCS PER PALLET

32

5 years warranty
Jahre Garantie
ans de garantie
años de garantía



CITY CRASH
Complies with DIN/ISO norm



Thule WingBar Edge 9594/9594B

The most safe and silent roof rack. In low fit for cars with fixpoints or flush rails.

1. Thule's premium, aerodynamic rack system
2. Smoothly arched for a slim fit
3. Universal fit by the use of telescopic feet (50mm/side)
4. Easy handling with pre-assembly system and integrated foot
5. A kit-based roof rack system. Fit existing Thule Rapid System 753-kit. Use the Thule FitGuide to find out which roof rack fits your car
6. Using airplane technology to minimize sound and fuel consumption
7. WindDiffuser diverts the air currents
8. Trail Edge for reduced air resistance
9. Double molded plastic caps for best appearance and easy fitting
10. City Crash approved for 75 kg according to ISO Norm

THULE NUMBER

959400

959420

EAN CODE

7313020063836

7313020070193

ALIAS NUMBER

9594 (Aluminium)

9594B (Black)

BAR LENGTH

81,6 & 89,6 cm

MAX LOAD

75 kg

CARTON DIMS (LXWXH) CARTON WEIGHT

120x20x13,7 cm

5,3 kg

PALLET DIMS (LXWXH) PALLET WEIGHT

120x80x124 cm

185 kg

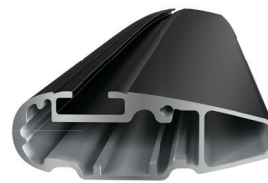
PCS PER PALLET

32

5 years warranty
Jahre Garantie
ans de garantie
años de garantía



CITY CRASH
Complies with DIN/ISO norm



Thule WingBar Edge

9595/9595B

The most safe and silent roof rack. In low fit for cars with fixpoints or flush rails.

1. Thule's premium, aerodynamic rack system
2. Smoothly arched for a slim fit
3. Universal fit by the use of telescopic feet (50mm/side)
4. Easy handling with pre-assembly system and integrated foot
5. A kit-based roof rack system. Fit existing Thule Rapid System 753-kit. Use the Thule FitGuide to find out which roof rack fits your car
6. Using airplane technology to minimize sound and fuel consumption
7. WindDiffuser diverts the air currents
8. Trail Edge for reduced air resistance
9. Double molded plastic caps for best appearance and easy fitting
10. City Crash approved for 75 kg according to ISO Norm

THULE NUMBER

959500

959520

EAN CODE

7313020063843

7313020070315

ALIAS NUMBER

9595 (Aluminium)

9595B (Black)

BAR LENGTH

89,6 & 97,6 cm

MAX LOAD

75 kg

CARTON DIMS (LXWXH) CARTON WEIGHT

120x20x13,7 cm

5,5 kg

PALLET DIMS (LXWXH) PALLET WEIGHT

120x80x124 cm

191 kg

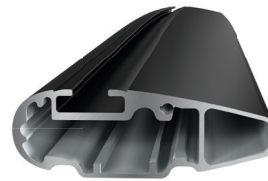
PCS PER PALLET

32

5 years warranty
Jahre Garantie
ans de garantie
años de garantía



CITY CRASH
Complies with DIN/ISO norm



Thule WingBar Edge

9596/9596B

The most safe and silent roof rack. In low fit for cars with fixpoints or flush rails.

1. Thule's premium, aerodynamic rack system
2. Smoothly arched for a slim fit
3. Universal fit by the use of telescopic feet (50mm/side)
4. Easy handling with pre-assembly system and integrated foot
5. A kit-based roof rack system. Fit existing Thule Rapid System 753-kit. Use the Thule FitGuide to find out which roof rack fits your car
6. Using airplane technology to minimize sound and fuel consumption
7. WindDiffuser diverts the air currents
8. Trail Edge for reduced air resistance
9. Double molded plastic caps for best appearance and easy fitting
10. City Crash approved for 75 kg according to ISO Norm

THULE NUMBER

959600

959620

EAN CODE

7313020075501

7313020075525

ALIAS NUMBER

9596 (Aluminium)

9596B (Black)

BAR LENGTH

97,6 & 107,6 cm

MAX LOAD

75 kg

CARTON DIMS (LXWXH) CARTON WEIGHT

120x20x13,7 cm

5,8 kg

PALLET DIMS (LXWXH) PALLET WEIGHT

120x80x124 cm

195 kg

PCS PER PALLET

32

5 years warranty
Jahre Garantie
ans de garantie
años de garantía



CITY CRASH
Complies with DIN/ISO norm